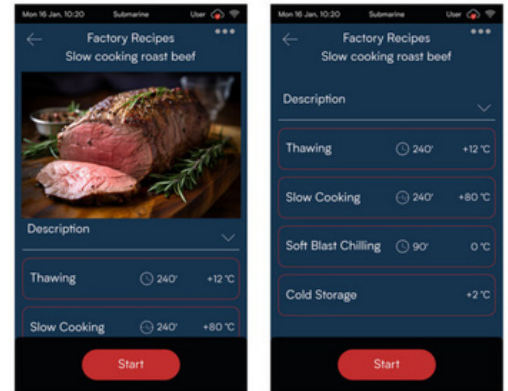


Freedom to create

Positive and negative blast chilling, thawing, proofing and retarder-proofer, pasteurization, slow cooking, maintaining the temperature, drying...are just some of the functions that can be managed immediately and precisely, individually or by connecting them in a single flow.



Model: SBM-061-HA-R290

Submarine

Tray type: 6 x 1/1 GN - 6 x EN1

SUBMARINE MULTIFUNCTION, CABINET - 6 X GN 1/1 - 6 X EN1. +85 / -40 °C - AIR CONDENSING UNIT

+3°C	-40°C / -18°C	-5°C / -40°C	-2°C / +18°C	-18°C / -21°C	+10°C / +16°C	+35°C / +65°C	-18°C / +32°C	+60°C / +85°C	+10°C / +32°C
Soft or hard blast chilling	Anisakis Killer	Continuous cycle	Storage	Negative Storage	Crystallisation	Dehydration	Retarder - Proofer	Slow Cooking	Proofing

-50°C / +70°C	+60°C / +85°C	+30°C / +55°C	-18°C / +3°C	-18°C	-35°C / -18°C	+38°C / +50°C			
Maintaining	Pasteurisation	Melting Chocolate	Thawing	Soft or hard freezing	Tapeworm Killer	Yogurt	Wifi Connection	Friulinox Cold Cloud	Ecological refrigerant gas

CE CB IPX4

Coast Distributors Pty Ltd
 Ph: (02) 9524 1234 / 1800 688 590
 PO Box 288, Unanderra, NSW 2526
sales@coastdistributors.com.au
www.coastdistributors.com.au

COMMANDS, CONTROLS AND SAFETY DEVICES

- 7" touch screen color display with control interface
- Quick-release heated core probe with 4 measuring points
- Control-activated chamber sanitisation system with active ions (HI-GIENE)
- Photo-identifiable processes
- USB connection for uploading and downloading data/recipes
- IoT connectivity as standard

STRUCTURAL CHARACTERISTICS

- External Scotch Brite satin finish stainless steel.
- High density CFC and HCFC-free PU insulation (42 kg/m3).
- AISI 304 stainless steel panel construction
- Patented chamber humidity-injecting system
- Stainless steel internal coating with fully rounded corners
- Die-moulded and leakproof internal base
- Anti-condensation heating element located on the box under the magnetic seal stop
- Strongbox ergonomic handle
- Magnetic seal on 4 sides of the door
- Indirect-flow electric fans - made of composite material - on the product
- Side guide-supporting uprights with 18 mm-pitch holes
- Compressor-protecting automatic-reset thermal circuit breaker
- Copper-aluminium evaporating coil, cataphoresis-painted with non-toxic epoxy resin
- Copper condensing coil with high thermal efficiency aluminium fins

REFRIGERANT GROUP

- Automatic defrost and defrost water self evaporating without the use of energy.
- R290 ecological refrigerant gas
- Hermetic compressor

VERSIONING

- Model with wheels
- Model with left hinged door

OPTIONAL TO BE REQUESTED WHEN ORDERING

TS-061-208-1N-60Hz-HO: 208-1N-60Hz-HO
CA-061: WOODEN CRATE PACKAGING
KRT-01: WHEEL KIT WITH BRAKE
PSX-061: LEFT HINGED DOOR

EXTRA ACCESSORIES THAT CAN BE INSTALLED FOLLOWING PURCHASE

FAC: LIMESCALE FILTER WITH CARTRIDGE
CFA: REPLACEMENT CARTRIDGE FOR LIMESCALE FILTER
FAI-061: STAINLESS STEEL DUST FILTER
GRI-EN1: STAINLESS STEEL GRILL - EN1
GRI-GN11: STAINLESS STEEL GRILL - GN 1/1
CGM: PAIR OF MULTI-STEP GUIDES
SMO07: M MONO-POINT PROBE - 0,7 MT.
SMU07: MULTIPOINT PROBE - 0,7 MT.
SSV07: VACUUM PROBE - 0,7 MT.
DE5: HAND SHOWER

Coast Distributors Pty Ltd
Ph: (02) 9524 1234 / 1800 688 590
PO Box 288, Unanderra, NSW 2526
sales@coastdistributors.com.au
www.coastdistributors.com.au

DIMENSIONS

Width	790 mm
Depth	820 mm
Height	900 mm
Door Span Width	670 mm
Internal Depth	435 mm
Package width	830 mm
Package depth	920 mm
Package height	1050 mm
Package volume	10,39 m ³
Weight	110 kg
Weight with package	150 kg

TECHNICAL DATA

Working temperature	+85 / -40 °C
Motor	Air condensing unit
PU insulation - Thickness	60 mm
Refrigerant - Type	R290

CAPACITY

N° Trays - h 20	10
N° Trays - h 40	6
N° Trays - h 65	5
Distance between layers - h 20	35 mm
Distance between layers - h 40	52.5 mm
Distance between layers - h 65	70 mm
Minimum distance between layers	17.5 mm
Capacity	6 x 1/1 GN - 6 x EN1

POWER SUPPLY

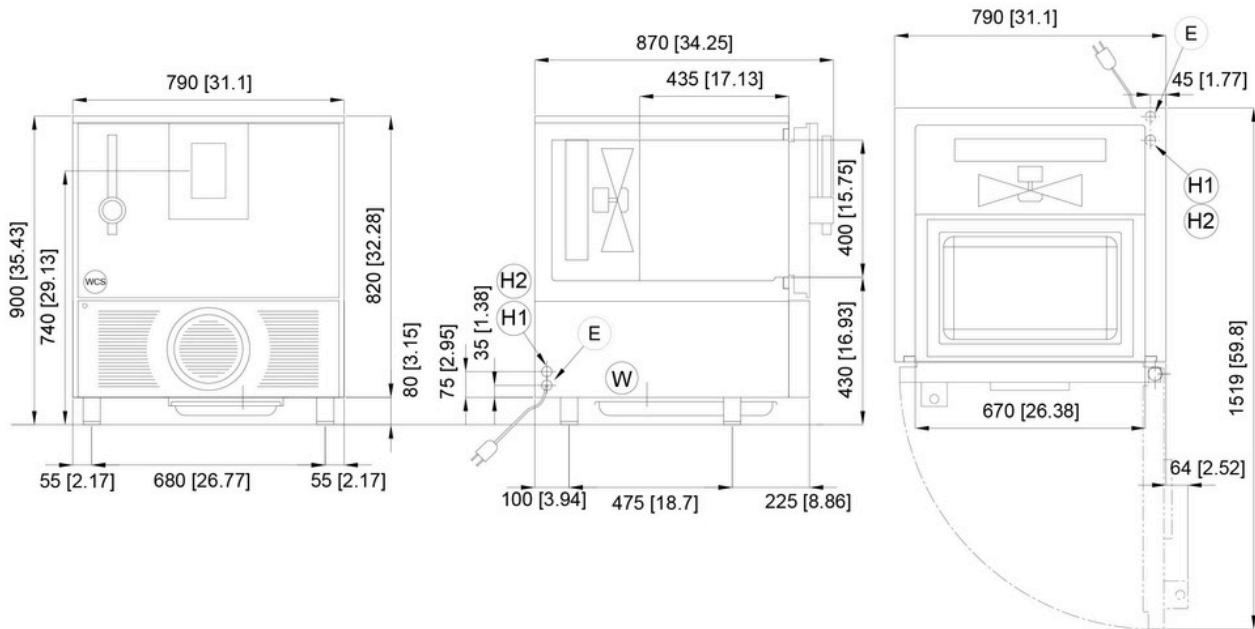
Max electric power	1,951 kW
Cooling power	1,137 kW
Max consumption	10,39 A
Power supply voltage	230 V
Electrical_Phase	1
Frequency	50 Hz

YIELDS AND PERFORMANCE

Yield per cycle +90/+3°C	35 kg
Yield per cycle +90/-18°C	25 kg
Yield per BC cycle according to standard EN17032 (+65/+10°C)	30 kg
Yield per BF cycle according to standard EN17032 (+65/-18°C)	20 kg
BC consumed energy according to standard EN17032	0.062 kW h/kg
BF consumed energy according to standard EN17032	0.221 kW h/kg
BC blast chilling consumption according to standard EN17032	1.87 kWh/Ciclo
BF blast chilling consumption according to standard EN17032	4.42 kWh/Ciclo

* BT - Evap. temp. -25°C / Cond. temp. +45°C.

Coast Distributors Pty Ltd
 Ph: (02) 9524 1234 / 1800 688 590
 PO Box 288, Unanderra, NSW 2526
sales@coastdistributors.com.au
www.coastdistributors.com.au



DIMENSIONI mm
DIMENSIONS [in]

- E CONNESSIONE ELETTRICA
ELECTRICAL CONNECTION
- W CONNESSIONE SCARICO OPZIONALE
OPTIONAL DRAIN CONNECTION
- H1 CONNESSIONE INGRESSO H2O 1/2"
INLET WATER CONNECTION 1/2"
- H2 CONNESSIONE USCITA H2O 1/2"
EXHAUST WATER CONNECTION 1/2"
- WCS CONNESSIONE OPZIONALE PER DOCCETTA ESTERNA
CONNECTION OPTIONAL FOR HAND SHOWER