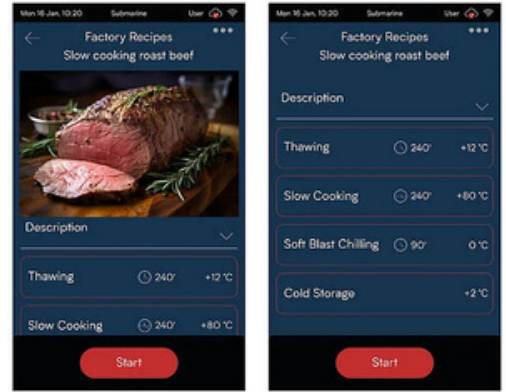


Freedom to create

Positive and negative blast chilling, thawing, proofing and retarder-proofer, pasteurization, slow cooking, maintaining the temperature, drying...are just some of the functions that can be managed immediately and precisely, individually or by connecting them in a single flow.



Model: SBM-122-HA

**Submarine**

SUBMARINE MULTIFUNCTION, CABINET - 24 X GN 1/1 - 24 X EN1. +85 / -40 °C - AIR CONDENSING UNIT

+3°C	-40°C / -18°C	-5°C / -40°C	-2°C / +18°C	-18°C / -21°C	+10°C / +16°C	+35°C / +65°C	-18°C / +32°C	+60°C / +85°C	+10°C / +32°C
Soft or hard blast chilling	Anisakis Killer	Continuous cycle	Storage	Negative Storage	Crystallisation	Dehydration	Retarder - Proofer	Slow Cooking	Proofing

-50°C / +70°C	+60°C / +85°C	+30°C / +55°C	-18°C / +3°C	-18°C	-35°C / -18°C	+38°C / +50°C			
Maintaining	Pasteurisation	Melting Chocolate	Thawing	Soft or hard freezing	Tapeworm Killer	Yogurt	Wifi Connection	Friulinox Cold Cloud	Ecological refrigerant gas

CE CB IPX4

**Coast Distributors Pty Ltd**  
 Ph: (02) 9524 1234 / 1800 688 590  
 PO Box 288, Unanderra, NSW 2526  
[sales@coastdistributors.com.au](mailto:sales@coastdistributors.com.au)  
[www.coastdistributors.com.au](http://www.coastdistributors.com.au)

## CONTROL MECHANISMS

- 7" touch screen color display with control interface
- Quick-release heated core probe with 4 measuring points
- Control-activated chamber sanitisation system with active ions (HI-GIENE)
- Photo-identifiable processes
- USB connection for uploading and downloading data/recipes
- IoT connectivity as standard
- Water inlet valve.
- Alarm viewing.
- Anti-odour door lock.
- Internal fan stop by micro switch when door is opened.

## STRUCTURAL CHARACTERISTICS

- External Scotch Brite satin finish stainless steel.
- High density CFC and HCFC-free PU insulation (42 kg/m3).
- Highly ventilated evaporator to ensure the cooling system's maximum efficiency
- Stainless steel internal coating with fully rounded corners
- Die-moulded and leakproof internal base
- Anti-condensation heating element located on the box under the magnetic seal stop
- Strongbox ergonomic handle
- Magnetic seal on 4 sides of the door
- Indirect-flow electric fans - made of composite material - on the product
- Side guide-supporting uprights with 18 mm-pitch holes
- Compressor-protecting automatic-reset thermal circuit breaker
- Copper-aluminium evaporating coil, cataphoresis-painted
- Copper condensing coil with high thermal efficiency aluminium fins
- Patented chamber humidity-injecting system

## OPERATION

- Ethernet connection for HACCP Log download and remote service.
- Automatic storage at the end of the blast chilling cycle.
- Multilevel function.
- Drying.
- Cell pre-cooling.
- Automatic defrost cycles.
- Wi-Fi connection for HACCP Log download and remote service.

## CLEANING AND MAINTENANCE

- Easy to wash and hygienic safety due to the suspended evaporator coil.
- Easy to clean in accordance with UNI EN 14159 hygiene regulations.

## INSTALLATION AND ENVIRONMENT

- Quality ISO 9001 / Safety ISO 45001 / Environmental ISO 14001 certification.
- 100% recyclable packaging.

## CONDENSING UNITS

- Automatic defrost and defrost water self evaporating without the use of energy.
- R290 ecological refrigerant gas

## STANDARD EQUIPMENT

- UNEQUIPPED REMOVABLE GRILL-HOLDING PANELS IN AISI 304 18/10 STAINLESS STEEL, WITH DOUBLE L-SHAPED GUIDES
- USB CONNECTION FOR UPLOADS AND DOWNLOADS
- QUICK-RELEASE HEATED CORE PROBE WITH 4 MEASURING POINTS

**Coast Distributors Pty Ltd**  
Ph: (02) 9524 1234 / 1800 688 590  
PO Box 288, Unanderra, NSW 2526  
[sales@coastdistributors.com.au](mailto:sales@coastdistributors.com.au)  
[www.coastdistributors.com.au](http://www.coastdistributors.com.au)

**OPTIONAL TO BE REQUESTED WHEN ORDERING**

CA-122: WOODEN CRATE PACKAGING

PSX-122: LEFT HINGED DOOR

SKRT-03: WHEEL KIT WITH BRAKE

**EXTRA ACCESSORIES THAT CAN BE INSTALLED FOLLOWING PURCHASE**

TS-122-440-3N-60Hz-0: 440- 3N- 60HZ- HO

TS-122-360-3N-60Hz-0: 360- 3N- 60HZ- HO

TS-122-208-3-60Hz-HO: 208- 3- 60HZ- HO

**Coast Distributors Pty Ltd**  
Ph: (02) 9524 1234 / 1800 688 590  
PO Box 288, Unanderra, NSW 2526  
[sales@coastdistributors.com.au](mailto:sales@coastdistributors.com.au)  
[www.coastdistributors.com.au](http://www.coastdistributors.com.au)

### Capacity

Capacity	24 x 1/1 GN - 24 x EN1
No. of layers - h 20	44
Distance between layers - h 20	37.5 mm
No. of layers - h 40	28
Distance between layers - h 40	56.25 mm
No. of layers - h 65	22
Distance between layers - h 65	75 mm
Minimum distance between layers	18.75 mm

### Dimensions

Width	1100 mm
Depth	1080 mm
Height	1860 mm
Packaging width	1140 mm
Packing depth	1180 mm
Packaging height	2010 mm
Net weight	255 kg
Gross weight	295 kg
Volume	2.2 m <sup>3</sup>
Packing volume	2.7 m <sup>3</sup>
Useful Inner Width	670 mm
Door height	930 mm
Inner depth	930 mm
PU insulation - Thickness	60 mm

### Technical Data

Working temperature	+85 °C / -40 °C
Motor	Air-cooled condensing unit
PU insulation - Thickness	60 mm
Climate class	5
GWP - Global Warming Potential	3
Refrigerant - Type	R452A
Refrigerant - Quantity	2300 g

### Power supply

Power supply voltage	3N-AC 400 V
Electrical absorption	15,38 A
Frequency	50 Hz
Total electric power	5.758 kW
Cooling power	3,619 kW
Heating power	1.6 kW

### Blast chilling

Blast Chilling Capacity in 90'   +90 / +3°C	100 kg
Freezing Capacity in 240'    +90 / -18°C	70 kg
Blast Chilling Capacity in 120'    +65 / +10°C - BC standard EN17032	100 kg
Freezing Capacity in 270'    +65 / -18°C	60 kg
Blast Chilling cycle time - BC standard EN17032	94 min
Freezing cycle time - BF standard EN17032	259 min
Blast Chilling energy consumed - BC standard EN17032	0.054 kW h / kg
Freezing cycle energy consumed - BF standard EN17032	0.178 kW h / kg

### Water Connection

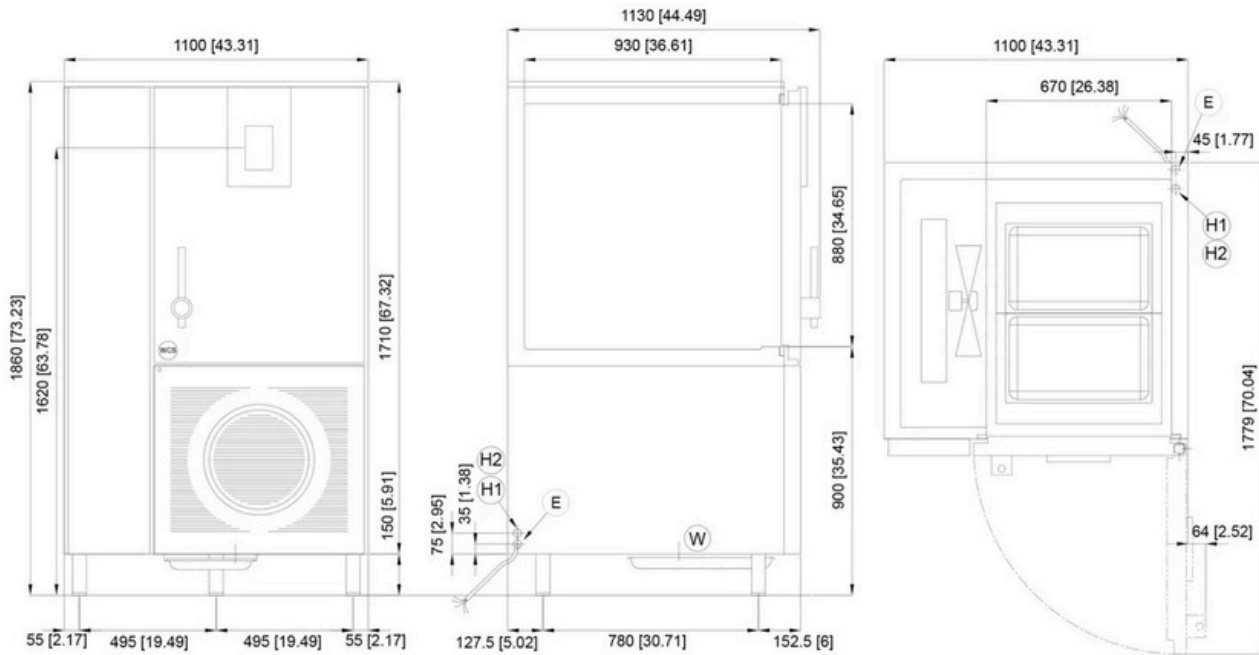
Discharge - ø	59 mm
---------------	-------

### Emissions

Noisiness	db< 70
-----------	--------

\* BT - Evap. temp. -25°C / Cond. temp. +45°C.

Coast Distributors Pty Ltd  
 Ph: (02) 9524 1234 / 1800 688 590  
 PO Box 288, Unanderra, NSW 2526  
[sales@coastdistributors.com.au](mailto:sales@coastdistributors.com.au)  
[www.coastdistributors.com.au](http://www.coastdistributors.com.au)



DIMENSIONI mm  
DIMENSIONS [in]

- E** CONNESSIONE ELETTRICA  
ELECTRICAL CONNECTION
- W** CONNESSIONE SCARICO OPZIONALE  
OPTIONAL DRAIN CONNECTION
- H1** CONNESSIONE INGRESSO H2O 1/2"  
INLET WATER CONNECTION 1/2"
- H2** CONNESSIONE USCITA H2O 1/2"  
EXHAUST WATER CONNECTION 1/2"
- WCS** CONNESSIONE OPZIONALE PER DOCCETTA ESTERNA  
CONNECTION OPTIONAL FOR HAND SHOWER